



RETAIL BUILDING WITH DRIVE THRU

318 N. Plum Street, Hutchinson, Kansas



SALE PRICE: \$150,000 | LEASE RATE: \$1,000/MONTH

DEMOGRAPHICS

	1 mile	3 miles	5 miles
Estimated Population	10,726	39,520	45,077
Avg. Household Income	\$51,998	\$75,579	\$79,715

- 1,400 SF building
- Freestanding drive thru opportunity
- High traffic location in Hutchinson, Kansas
- Great access of Plum Street
- Across from new Planet Fitness
- Includes small storage shed behind drive thru lane



CLICK HERE TO VIEW MORE LISTING INFORMATION

For More Information Contact:

PAUL MASSALI | 816.412.7409 | pmassali@blockandco.com

DAVID BLOCK | 816.412.7400 | dblock@blockandco.com

Exclusive Agents

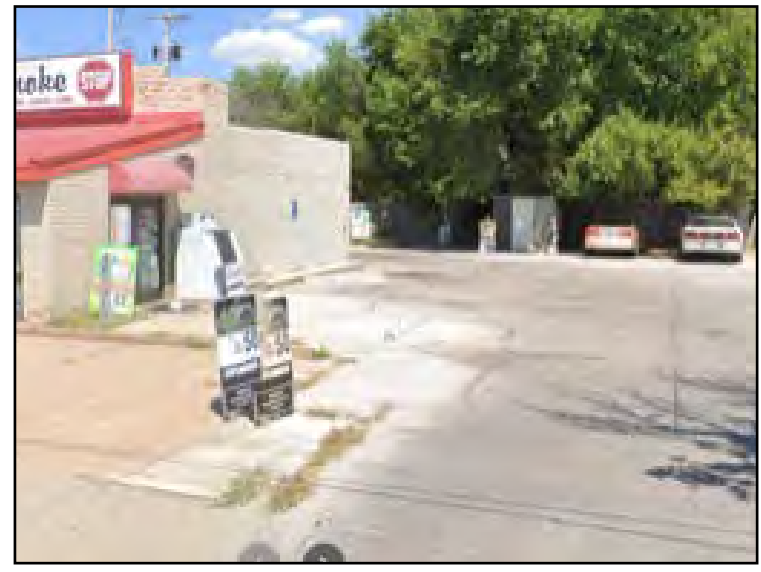




RETAIL BUILDING WITH DRIVE THRU

318 N. Plum Street, Hutchinson, Kansas

PHOTOS

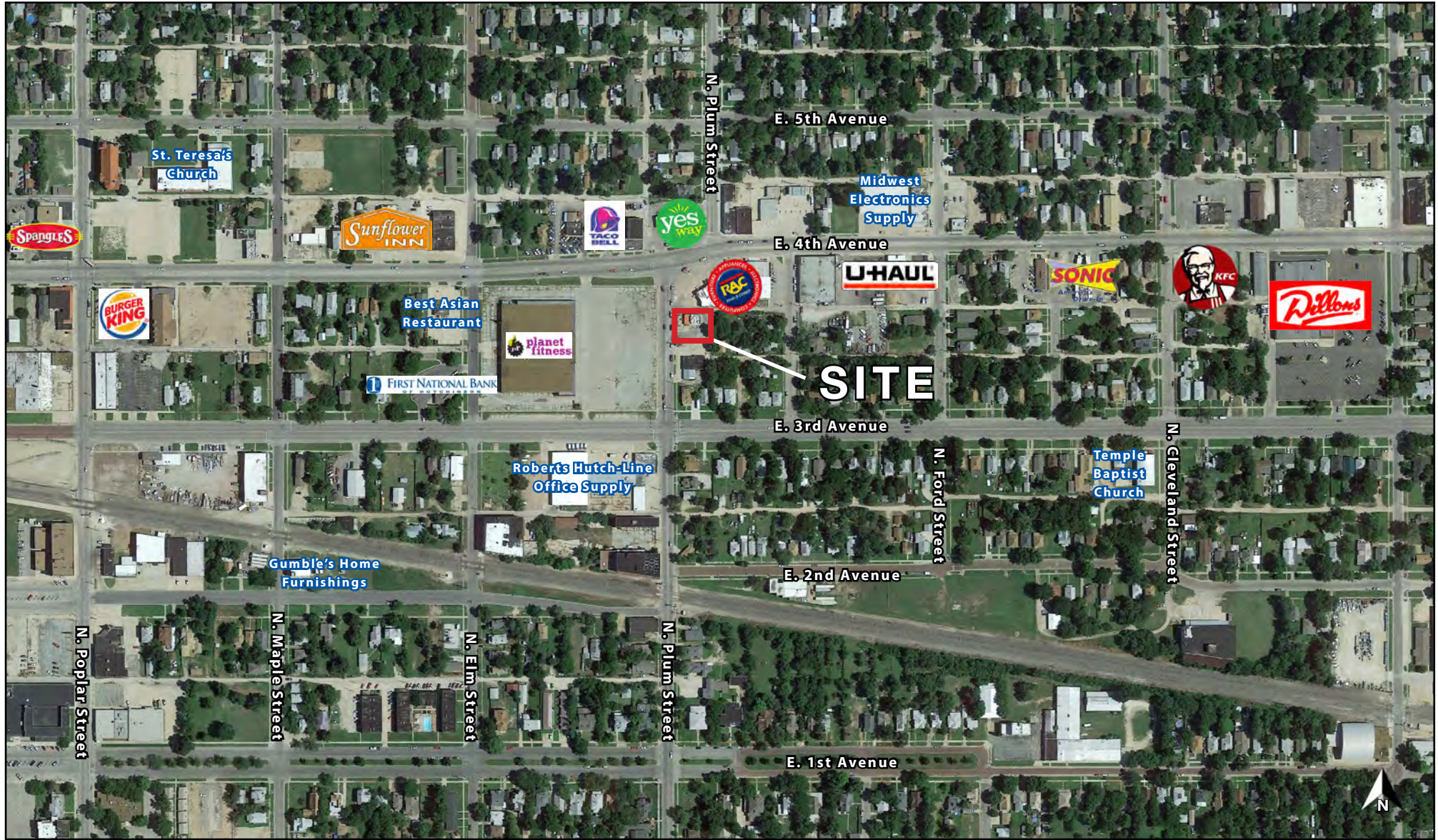




RETAIL BUILDING WITH DRIVE THRU

318 N. Plum Street, Hutchinson, Kansas

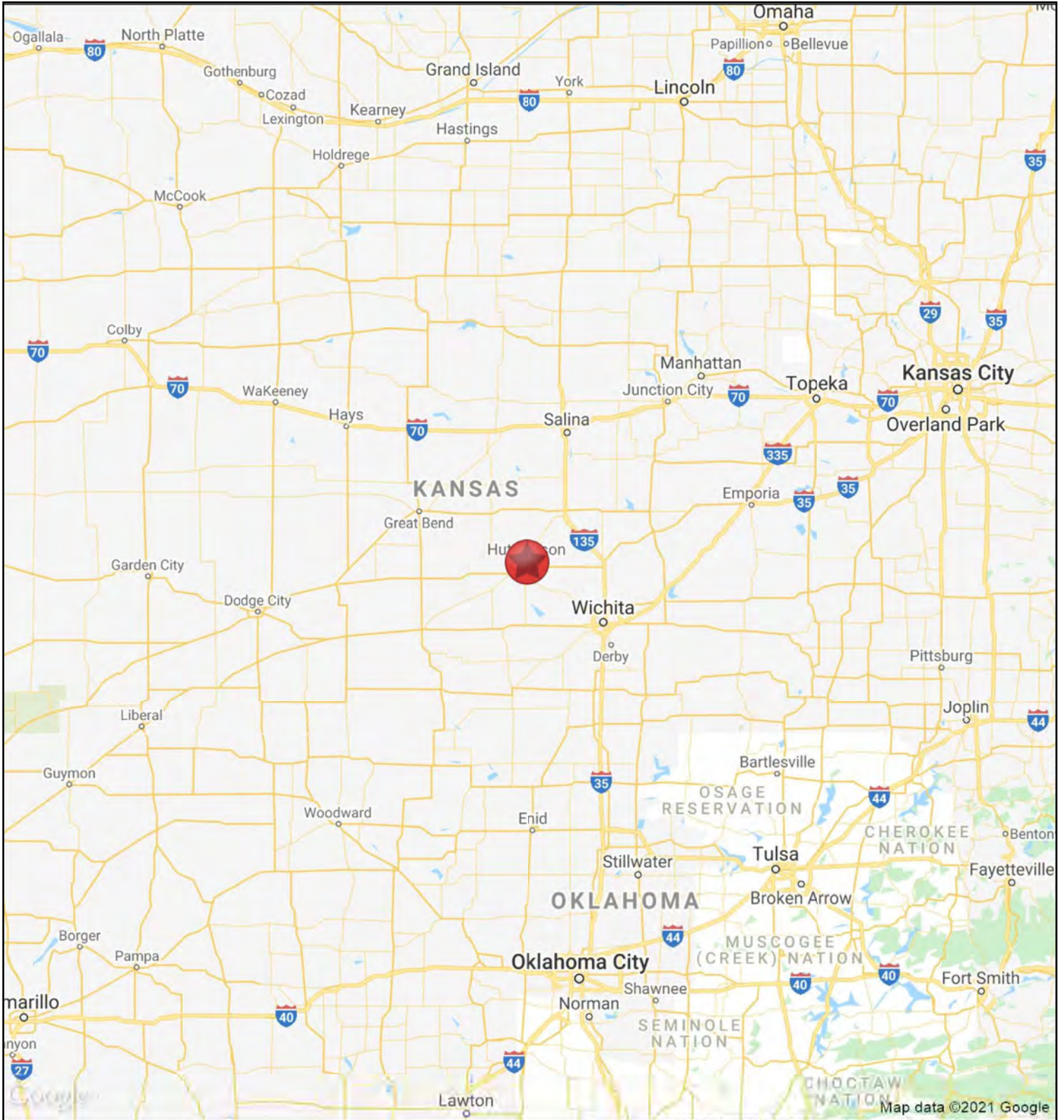
AERIAL

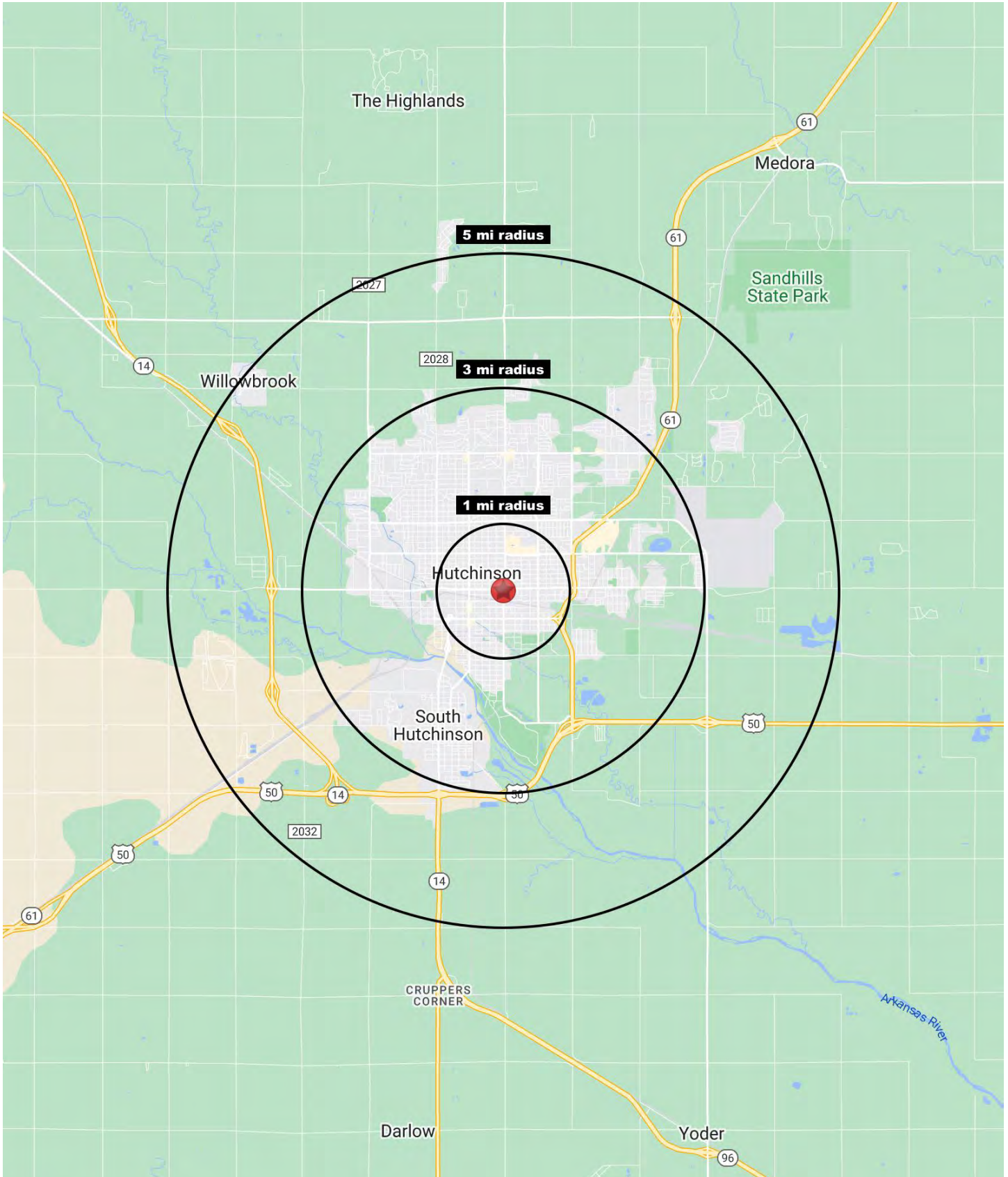




RETAIL BUILDING WITH DRIVE THRU

318 N. Plum Street, Hutchinson, Kansas







RETAIL BUILDING WITH DRIVE THRU

318 N. Plum Street, Hutchinson, Kansas

318 N. Plum Street Hutchinson, KS 67501	1 mi radius	3 mi radius	5 mi radius
Population			
2023 Estimated Population	10,726	39,520	45,077
2028 Projected Population	10,070	37,931	43,425
2020 Census Population	10,836	40,248	45,808
2010 Census Population	11,601	42,437	47,983
Projected Annual Growth 2023 to 2028	-1.2%	-0.8%	-0.7%
Historical Annual Growth 2010 to 2023	-0.6%	-0.5%	-0.5%
2023 Median Age	32.6	38.7	39.5
Households			
2023 Estimated Households	4,434	16,678	18,846
2028 Projected Households	4,091	15,748	17,864
2020 Census Households	4,466	16,874	19,021
2010 Census Households	4,687	17,350	19,467
Projected Annual Growth 2023 to 2028	-1.5%	-1.1%	-1.0%
Historical Annual Growth 2010 to 2023	-0.4%	-0.3%	-0.2%
Race and Ethnicity			
2023 Estimated White	80.6%	82.4%	82.8%
2023 Estimated Black or African American	4.7%	6.5%	6.4%
2023 Estimated Asian or Pacific Islander	3.8%	1.5%	1.4%
2023 Estimated American Indian or Native Alaskan	0.6%	0.6%	0.6%
2023 Estimated Other Races	10.4%	9.0%	8.8%
2023 Estimated Hispanic	13.6%	12.0%	11.6%
Income			
2023 Estimated Average Household Income	\$51,998	\$75,579	\$79,715
2023 Estimated Median Household Income	\$41,048	\$53,792	\$57,540
2023 Estimated Per Capita Income	\$21,934	\$32,795	\$34,212
Education (Age 25+)			
2023 Estimated Elementary (Grade Level 0 to 8)	2.1%	1.8%	1.8%
2023 Estimated Some High School (Grade Level 9 to 11)	11.4%	6.8%	6.3%
2023 Estimated High School Graduate	31.4%	30.0%	29.5%
2023 Estimated Some College	29.7%	30.5%	30.1%
2023 Estimated Associates Degree Only	13.6%	10.9%	11.0%
2023 Estimated Bachelors Degree Only	8.5%	12.8%	13.7%
2023 Estimated Graduate Degree	3.3%	7.1%	7.6%
Business			
2023 Estimated Total Businesses	519	1,411	1,498
2023 Estimated Total Employees	5,528	20,401	21,575
2023 Estimated Employee Population per Business	10.7	14.5	14.4
2023 Estimated Residential Population per Business	20.7	28.0	30.1

©2023, Sites USA, Chandler, Arizona, 480-491-1112 Demographic Source: Applied Geographic Solutions 4/2023, TIGER Geography - RS1